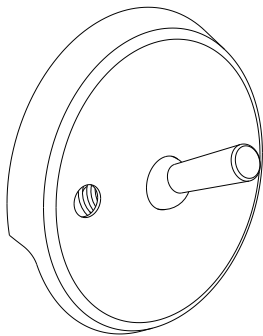
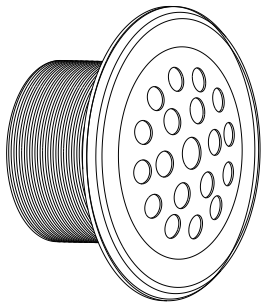


INSTALLATION INSTRUCTIONS

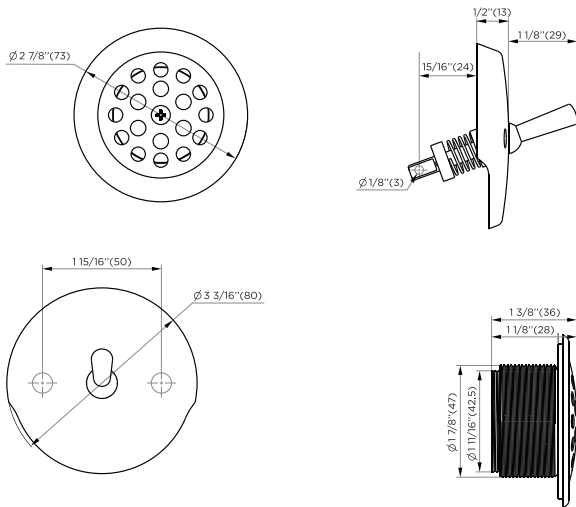
TRIP LEVER

DRAIN



MODEL# TLD

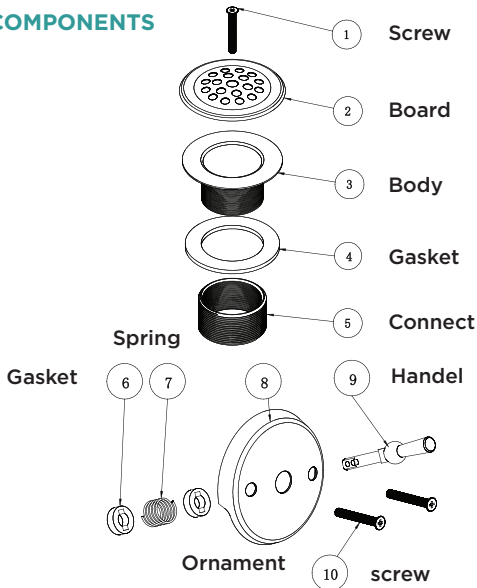
DIMENSIONS/TECHNICAL DATA



ATTENTION! Dimensions may vary by up to 3/8".

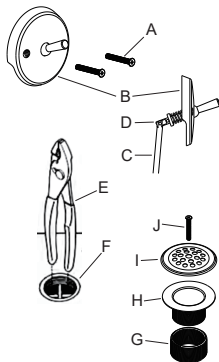
It is highly recommended to pull all dimensions of actual model for installation and measuring purposes.

ITEM COMPONENTS



INSTRUCTIONS

1. Remove screws (A) from old overflow plate (B)
2. Detach plate from linkage (C) by removing cotter pin (D)
3. Attach linkage to new overflow plate (B)
4. Align screw holes on your new overflow plate and thread screws into place.
5. Remove worm drain assembly by inserting handles of pliers (E) into drain, engaging cross members and then unthreading the drain assembly (F).
6. Thread bushing (G) into drain. Some narrow drains may not need a bushing.
7. Spread an even layer of plumber's putty under the lip of shoe (H) to provide seal
8. Thread shoe (H) into drain. Tighten so that lip of shoe is tight to drain and plumber's putty forms a seal.
9. Attach strainer plate (I) to shoe (H) with screw (J).



WARNING:

This product can expose you to chemicals including Chromium (hexavalent compounds), which is known to the State of California to cause cancer and birth defects or other reproductive harm. For more information go to www.P65Warnings.ca.gov.



206 WEMBLY ROAD - NEW WINDSOR, NY 12553
P: 718.602.6060 F: 718.963.2082 - E: INFO@FINEFIXTURES.COM
TOLL FREE: 1.877.8FIXTURES
FINEFIXTURES.COM

